

SuperOx
20-2 Nauchnyi proezd
Moscow, Russia, 117246
tel.: +7 495 669 79 95
fax.: +7 495 669 79 96
info@superox.ru
www.superox.ru/en

SuperOx Japan LLC
SIC-3, 1880-2 Kamimizo
Sagamihara, Kanagawa, Japan
tel.: +81 042 707 70 77
fax.: +81 042 707 90 44
sergey@superox.co.jp

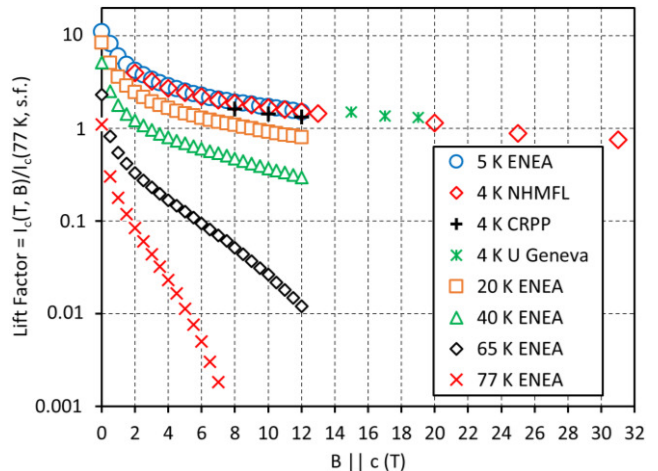
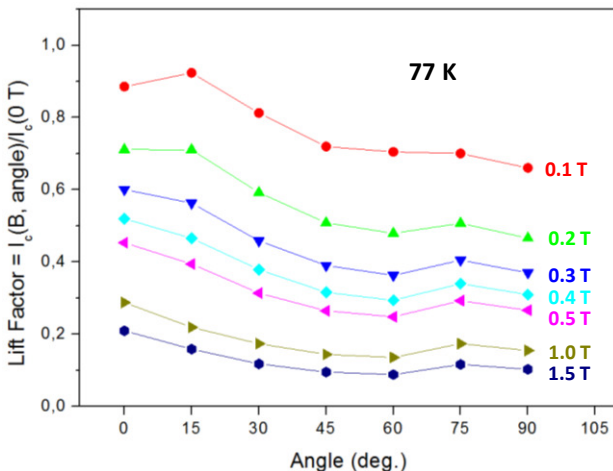
ARCHITECTURE

Layer from top to bottom	Thickness	Processing technology
Finish	Custom finish tailored to application (see overleaf)	
Ag	1-10 μm	DC sputtering
GdBCO	1-3 μm	PLD
CeO ₂ : RE	100-200 nm	
LaMnO ₃	30-50 nm	RF and/or DC sputtering
IBAD-MgO	5-7 nm	
Y ₂ O ₃ or LaMnO ₃	30-50 nm	
Al ₂ O ₃	50 nm	
Hastelloy C276	60 or 100 μm	Cold-rolling and electropolishing

SPECIFICATIONS

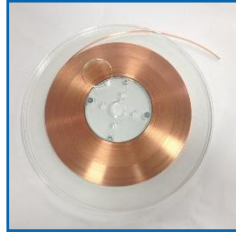
Parameter	Value	
Production length	up to 550 m	
Substrate thickness	60 or 100 μm	
Silver layer thickness	1 to 10 μm	
Surround copper layer thickness	0 to 100 μm	
Tensile strength (95% of I _c retained)	> 500 MPa / 0.55% deformation	
Critical bend diameter	22 mm	
Tape width	4 mm	12 mm
Critical current at 77 K, s.f.	100 to 150 A	300 to 500 A
Current uniformity	$\pm 10\%$	$\pm 10\%$

PERFORMANCE IN FIELD



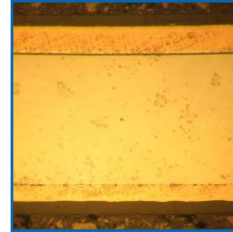
SuperOx
20-2 Nauchnyi proezd
Moscow, Russia, 117246
tel.: +7 495 669 79 95
fax.: +7 495 669 79 96
info@superox.ru
www.superox.ru/en

STABILISE



- Surround Cu electroplating
- NO dog-bone effect
- ANY Cu thickness: 1-100 μm
- ANY Ag thickness: 1-10 μm

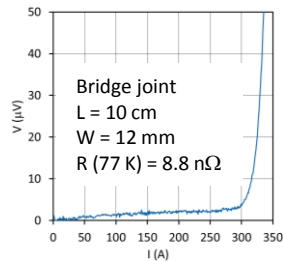
INSULATE



- PI coating 5 μm
- Copper 10 μm
- Silver 1 μm
- Buffers + HTS 2 μm
- Substrate 60 μm

- Surround Polyimide (PI) coating
- Modified dip coating
- Thin (5-20 μm), uniform layer
- Advanced alternative to Kapton wrapping

SPLICE



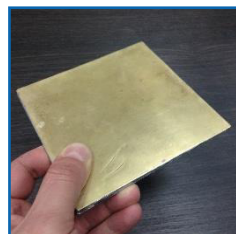
- Enable unlimited length tape
- Critical bend diameter 25 mm
- ρ (77 K) < 100 n Ω ·cm²

SOLDER | LAMINATE | STACK



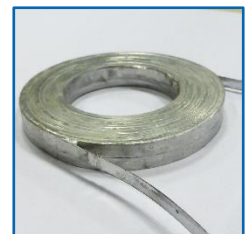
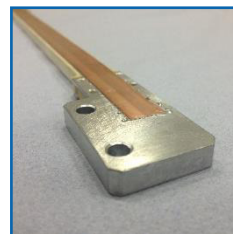
- 190°C PbSn
- 120°C SnIn
- 95°C PbBiSn (Rose's metal)
- Brass or SS lamination

TRAP FIELD | LEVITATE



- Multiple layers of 2G HTS tapes soldered in flat plates of any shape
- Engineerable alternative to bulk HTS
- Use as permanent magnet
- Use for levitation

INTEGRATE



- HTS current leads for LTS magnets
- Custom design
- 100 A-1 kA
- Double pancake coils
- Racetrack coils
- Insulated or NI